

# The Industry Standard



## All floor pads are not created equally

The differences between floor pads may seem small. But when added up, they can make a big difference to your bottom line in terms of productivity and labor costs.

3M™ Floor Pads offer:

- Uniform distribution of mineral abrasives throughout the pad (not just on the surface) assures superior performance and long, useful life.
- Individually separated and coated fibers help produce better, more consistent results.
- The right amount of aggressiveness for every type of stripping, scrubbing, cleaning and burnishing job.
- Each floor pad is engineered specifically for a particular maintenance task.

For more information visit [www.3M.com/commcare](http://www.3M.com/commcare)

A person wearing light-colored pants and white sneakers is operating a large, dark-colored floor buffer machine on a light-colored floor. The machine is positioned in the foreground, and the person's legs and feet are visible in the background. The entire image has a yellowish tint.

# Floor & Carpet Care

Matting

Vacuums

Vacuum Accessories

Floor Machines

Floor Machines & Accessories

Floor Pads



**3M™ Nomad™ Carpet Matting** removes more dirt and water than other carpet matting.

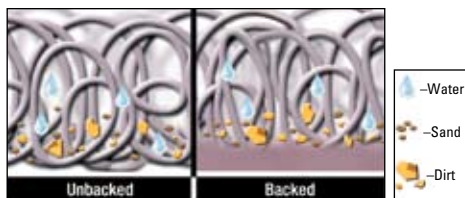


**3M™ Nomad™ Scraper Matting** removes up to 72% more dirt than other types of entrance matting.

## 3M™ Nomad™ Entrance Matting System

The 3M™ Nomad™ Entrance Matting System is not just a mat. It's a system. Each mat in the system does a specific job. 3M™ Nomad™ Scraper Matting (vinyl loop) traps dirt before it gets in the building. 3M™ Nomad™ Carpet Matting—designed for indoor use—captures moisture and dirt particles not removed by outdoor matting.

## Different mats for specific jobs



### 3M™ Scraper Matting

- Removes up to 72% more dirt than other types of entrance matting
- Resilient vinyl loops scrape dirt and moisture off shoes
- Coiled loop construction effectively traps and hides dirt
- Dirt and water can easily be removed by shaking, vacuuming or rinsing



### 3M™ Carpet Matting

- Patented dual-fiber design:
  - coarse polypropylene fibers scrape, remove and hide small soil particles
  - fine looped nylon or polypropylene fibers wick away water
- Specially crimped fibers help keep the mat from crushing and trap dirt and water
- Remove dirt and water as you would for any carpet—through vacuuming and periodic extraction

## 3M™ Entrance Matting

Matting	Application	Traffic Level
<b>3M™ Dirt Stop Scraper Mat</b>	Backed vinyl loop matting for <b>outside entrances</b>	Light—up to 50,000 people/year
<b>3M™ Nomad™ Carpet Matting 4000</b>	Dual-fiber carpet matting for foyers, <b>inside entrances</b>	Light—up to 50,000 people/year
<b>3M™ Nomad™ Scraper Matting 6050</b>	Backed vinyl loop matting for <b>outside entrances</b> , foyers, recessed well areas	Medium—up to 400,000 people/year
<b>3M™ Nomad™ Scraper Matting 6250</b>	"Z" construction allows dirt and moisture to flow through and become trapped at the backing	Medium—up to 400,000 people/year
<b>3M™ Nomad™ Carpet Matting 6500</b>	Dual-fiber carpet matting for foyers, <b>inside entrances</b>	Medium—up to 400,000 people/year
<b>3M™ Nomad™ Scraper Matting 8100</b>	Unbacked vinyl loop matting for <b>outside entrances</b> , foyers, recessed well areas	Heavy—up to 1,000,000 people/year
<b>3M™ Nomad™ Carpet Matting 8850</b>	Dual-fiber carpet matting for foyers, <b>inside entrances</b>	Heavy—up to 1,000,000 people/year





## Barbarians at the gate? Matting at the door!



**3M**

**3M**

- Coiled vinyl loops scrape, trap and hide dirt and moisture from shoes; minimizes tracking debris into building
- Easy-to-clean crush-resistant vinyl; just hose or shake clean

### **A** 3M™ Dirt Stop™

Handles light foot traffic—up to 50,000 people per year. Vinyl backing retains debris; prevents water seepage. Manufacturer's limited one-year warranty.

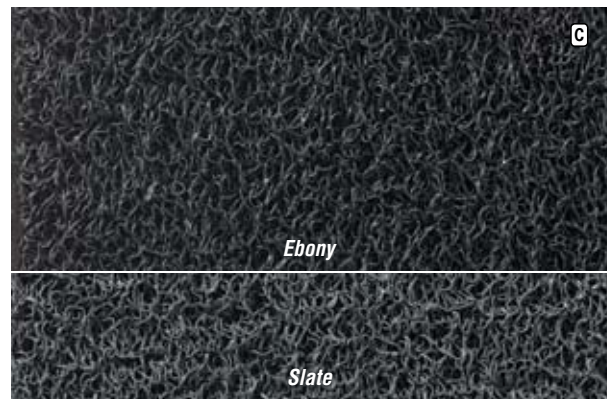
No.	Color	Size	Shpg. Wt.	Each
MCO 29627	Slate	22 x 34	3.55 lbs.	<b>37.56</b>
MCO 29625	Chestnut	22 x 34	3.55 lbs.	<b>37.56</b>
MCO 34838	Slate	36 x 60	10 lbs.	<b>86.04</b>
MCO 34839	Chestnut	36 x 60	10 lbs.	<b>86.04</b>
MCO 34843	Slate	48 x 72	16 lbs.	<b>135.58</b>
MCO 34840	Chestnut	48 x 72	16 lbs.	<b>135.58</b>



### **B** 3M™ Nomad™ 6050

Handles medium foot traffic—up to 400,000 people per year. Vinyl backing retains debris; prevents water seepage. Manufacturer's limited one-year warranty.

No.	Color	Size	Shpg. Wt.	Each
MCO 17780	Ebony	36 x 60	10.5 lbs.	<b>172.10</b>
MCO 26187	Dove	36 x 60	10.5 lbs.	<b>172.10</b>
MCO 26445	Slate	36 x 60	10.5 lbs.	<b>172.10</b>
MCO 26448	Chestnut	36 x 60	10.5 lbs.	<b>172.10</b>
MCO 17790	Ebony	48 x 72	16.58 lbs.	<b>275.38</b>
MCO 26189	Dove	48 x 72	16.58 lbs.	<b>275.36</b>
MCO 26452	Slate	48 x 72	16.58 lbs.	<b>275.36</b>
MCO 26455	Chestnut	48 x 72	16.58 lbs.	<b>275.38</b>

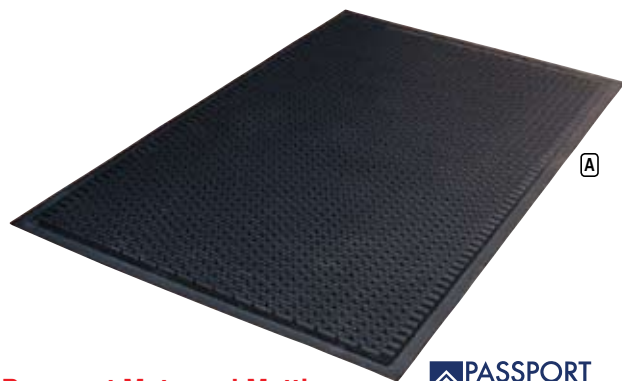


### **C** 3M™ Nomad™ 8100

Handles heavy foot traffic—up to 1,000,000 people per year. Designed for exterior facility entrances or recessed wells. "Unbacked" construction lets dirt fall through mat, trapping it at bottom for easy cleanup—just hose grime away! Grease- and oil-resistant. Manufacturer's limited two-year warranty.

No.	Color	Size	Shpg. Wt.	Each
MCO 26503	Slate	36 x 60	18.77 lbs.	<b>269.06</b>
MCO 29466	Ebony	36 x 60	18.77 lbs.	<b>269.06</b>
MCO 26515	Slate	48 x 72	29.5 lbs.	<b>430.44</b>
MCO 29468	Ebony	48 x 72	29.5 lbs.	<b>430.44</b>





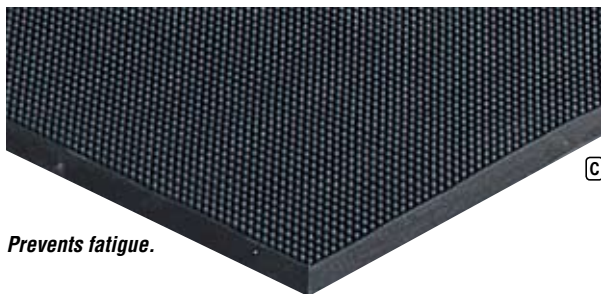
## Passport Mats and Matting



### A Kleen Scrape Outdoor Mat

Variegated texture prevents dirt, grit and grime from entering the building. Made of durable rubber compound that withstands rigorous weather. Cleans easily—just shake out or hose off. Overall thickness 3/8". Black.

No.	Size	Shpg. Wt.	Each
VLO 0065587	36 x 60	11 lbs.	<b>117.20</b>
VLO 4468246	48 x 72	18 lbs.	<b>187.50</b>



Prevents fatigue.

### C Finger Outdoor Scrape Mat

High-quality, heavy-duty rubber provides long-lasting cleaning action. Ideal for outside use. Thousands of flexible, sturdy rubber "bristles" brush off mud, slush and snow; collect dirt and moisture at base of mat. Buoyancy of rubber bristles prevents fatigue. Slip-resistant base keeps mat in position, while beveled border helps prevent tripping. Easy to clean—just turn over, shake out or hose off. Overall thickness 1/2". Black.

No.	Size	Shpg. Wt.	Each
VLO 0438022	24 x 32	10 lbs.	<b>40.20</b>
VLO 0438024	36 x 72	32.8 lbs.	<b>163.78</b>



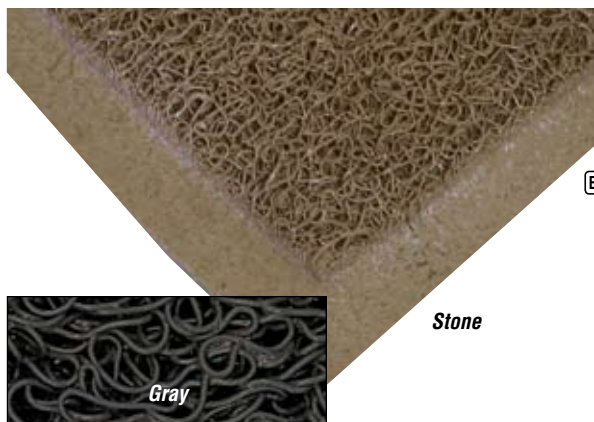
Black

Terra Cotta

### D Greaseproof/Grease-Resistant Ramp Mat

Provides safe footing in wet or high-grease work areas. Raised nubs reduce slippage as well as fatigue. Resilient rubber construction. Minimizes foot fatigue. Overall 1/2" thick. Hose off to clean. 36 x 60.

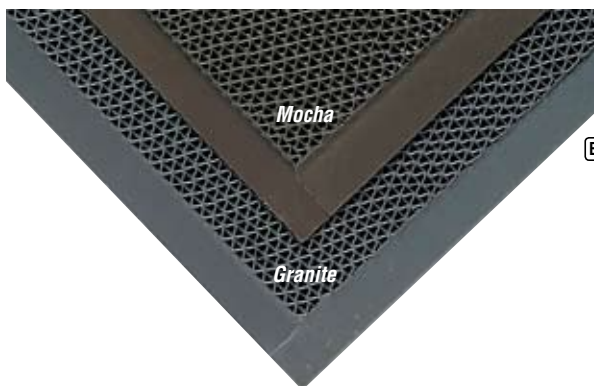
No.	Description	Color	Each
VLO 0755101	Greaseproof	Terra Cotta	<b>142.08</b>
VLO 0755100	Grease-Resistant	Black	<b>101.52</b>



### B Coil Outdoor Mat

The ultimate exterior mat. Durable, fire-resistant vinyl loops grab dirt and moisture from shoes and trap it below the surface of the mat. 3/8" thick with a solid sheet slip-resistant vinyl back. Dries quickly, resists mildew. Shake out or hose off to clean.

No.	Color	Size	Shpg. Wt.	Each
VLO 4456548	Gray	36 x 60	13.5 lbs.	<b>150.86</b>
VLO 4456486	Stone	36 x 60	13.5 lbs.	<b>150.86</b>
VLO 4456492	Gray	48 x 72	21.6 lbs.	<b>241.32</b>
VLO 4456594	Stone	48 x 72	21.6 lbs.	<b>241.32</b>



Vinyl backing traps dirt and moisture.

**3M**

**3M**

### E 3M™ Nomad™ Indoor Scraper Mat 6250

Ideal for indoor foyer entrances or other areas where liquid absorption is essential. Open "Z" design allows dirt and moisture to flow through and become trapped in the vinyl backing. Backing reduces creeping and increases comfort. Durable, low-profile, skid-resistant surface lets foot and wheel traffic move easily. Beveled edges help prevent tripping. Easy and inexpensive to maintain—just shake, vacuum or rinse clean.

No.	Color	Size	Shpg. Wt.	Each
MCO 20223	Mocha	36 x 60	14 lbs.	<b>181.18</b>
MCO 20234	Granite	36 x 60	14 lbs.	<b>181.18</b>
MCO 20226	Mocha	48 x 72	23.6 lbs.	<b>289.86</b>
MCO 20237	Granite	48 x 72	23.6 lbs.	<b>289.86</b>





# Heavy traffic? No problem...

**3M**

**3M**

## 3M™ NOMAD™ ENTRANCE MATS

- Dual-fiber construction for exceptional dirt and water removal
  - Fibers resist staining and fading; mats look new longer
  - Slip-resistant vinyl backing will not stain floor
- Large, crush-resistant polypropylene fibers scrape off loose dirt not removed by outdoor scraper matting; tough, looped nylon fibers wick away water. Pattern designs hide unsightly soil between cleanings. Vacuum or use extraction method to clean.

### A Nomad™ 4000

Handles light foot traffic—up to 50,000 people per year. Manufacturer's limited one-year warranty.

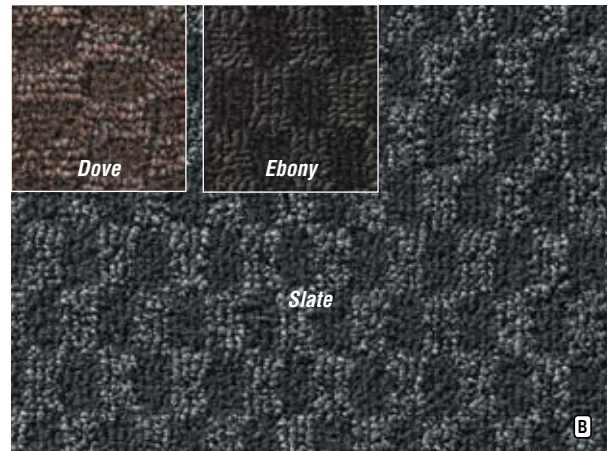
No.	Color	Size	Shpg. Wt.	Each
MCO 23767	Charcoal	36 x 60	12 lbs.	<b>96.88</b>
MCO 23768	Brown	36 x 60	12 lbs.	<b>96.88</b>
MCO 23769	Light Gray	36 x 60	12 lbs.	<b>96.88</b>
MCO 23790	Charcoal	48 x 72	18 lbs.	<b>154.98</b>
MCO 23791	Brown	48 x 72	18 lbs.	<b>154.98</b>
MCO 23793	Light Gray	48 x 72	18 lbs.	<b>154.98</b>



### B Nomad™ 6500

For medium foot traffic—up to 400,000 people per year. Manufacturer's limited one-year warranty.

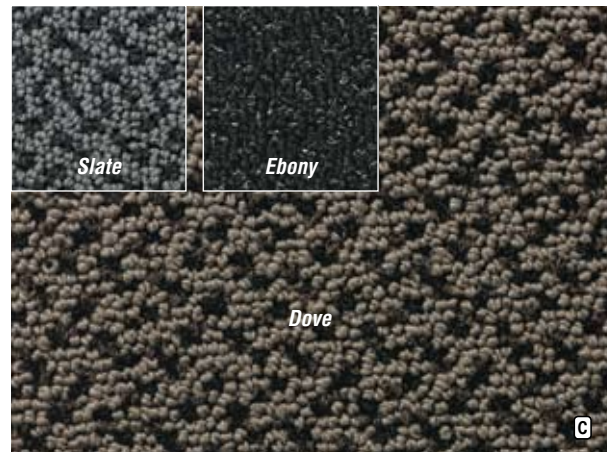
No.	Color	Size	Shpg. Wt.	Each
MCO 13514	Slate	36 x 60	13.2 lbs.	<b>170.04</b>
MCO 13535	Dove	36 x 60	13.2 lbs.	<b>170.04</b>
MCO 26337	Ebony	36 x 60	13.2 lbs.	<b>170.06</b>
MCO 13528	Slate	48 x 72	21.2 lbs.	<b>272.14</b>
MCO 13534	Dove	48 x 72	21.2 lbs.	<b>272.14</b>
MCO 26338	Ebony	48 x 72	21.2 lbs.	<b>272.14</b>



### C Nomad™ 8850

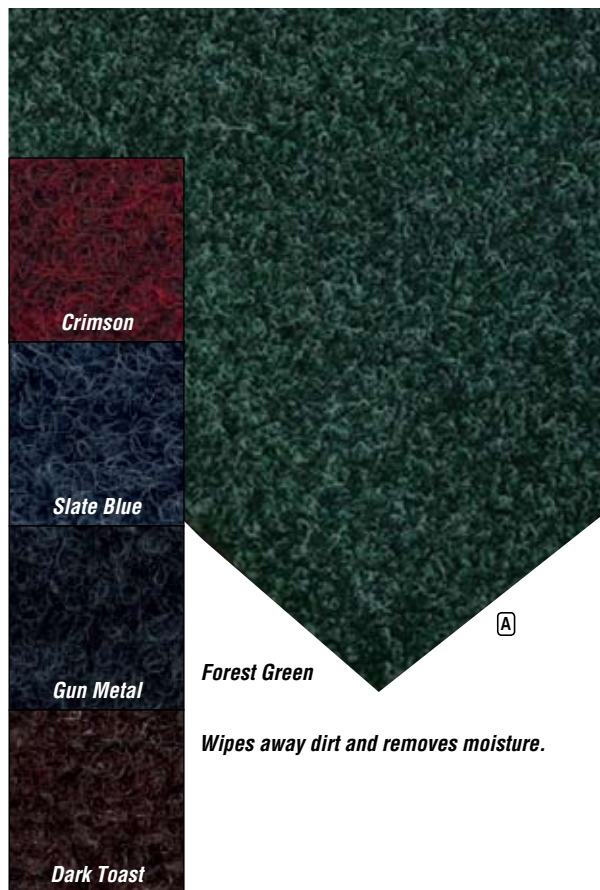
Handles heavy foot traffic—up to 1,000,000 people per year. Low profile allows foot and wheel traffic to traverse easily. Manufacturer's limited two-year warranty.

No.	Color	Size	Shpg. Wt.	Each
MCO 20544	Dove	36 x 60	13.2 lbs.	<b>211.74</b>
MCO 20559	Slate	36 x 60	13.2 lbs.	<b>211.74</b>
MCO 20583	Ebony	36 x 60	13.2 lbs.	<b>211.74</b>
MCO 20545	Dove	48 x 72	21.1 lbs.	<b>338.80</b>
MCO 20560	Slate	48 x 72	21.1 lbs.	<b>338.80</b>
MCO 20584	Ebony	48 x 72	21.1 lbs.	<b>338.80</b>



*Did you know...?*

When maintained properly, carpeting and area rugs are not at all risks to public health. In fact, carpets only need to be vacuumed once or twice weekly and cleaning extraction performed periodically.



**Forest Green**

*Wipes away dirt and removes moisture.*

## Passport Mats and Matting



### A Olefin® Wiper Mat

Decorative, all-purpose mat at an economical price. Wipes dirt from shoes and absorbs moisture. Durable, 100% continuous filament Olefin® carpet surface is bonded to a stain-resistant, slip-resistant base. Dries quickly and retains color. Tweed pattern conceals dirt. Overall thickness 3/8". Vacuum or professionally clean.

No.	Color	Each
<b>Size 24 x 36</b>		
VLO 4468172	Crimson	<b>21.42</b>
VLO 4468174	Slate Blue	<b>21.42</b>
VLO 4468171	Gun Metal	<b>21.42</b>
VLO 4468173	Dark Toast	<b>21.42</b>
VLO 4468175	Forest Green	<b>21.42</b>
<b>Size 36 x 48</b>		
VLO 0434331	Crimson	<b>42.54</b>
VLO 4468110	Slate Blue	<b>42.54</b>
VLO 0434323	Gun Metal	<b>42.54</b>
VLO 0434315	Dark Toast	<b>42.54</b>
VLO 4468111	Forest Green	<b>42.54</b>
<b>Size 36 x 60</b>		
VLO 0434332	Crimson	<b>53.30</b>
VLO 4468078	Slate Blue	<b>53.30</b>
VLO 0434324	Gun Metal	<b>53.30</b>
VLO 0434316	Dark Toast	<b>53.30</b>
VLO 4468181	Forest Green	<b>53.30</b>
<b>Size 48 x 72</b>		
VLO 0434336	Crimson	<b>84.86</b>
VLO 4468082	Slate Blue	<b>84.86</b>
VLO 0434328	Gun Metal	<b>84.86</b>
VLO 0434320	Dark Toast	<b>84.86</b>
VLO 4468163	Forest Green	<b>84.86</b>



*Ribbed polypropylene traps dirt and channels moisture away.*

### B Ribbed Wiper Mat

Stain-resistant 100% polypropylene ribbed surface traps dirt and channels moisture to edges. Slip-resistant, heavy-duty vinyl base and edges. Outstanding durability even in the toughest indoor or outdoor locations. Stylish bi-level pattern. Overall thickness 3/8". Vacuum or professionally clean.

No.	Color	Size	Each
VLO 0434364	Coffee	36 x 60	<b>73.20</b>
VLO 0434348	Midnight	36 x 60	<b>73.20</b>
VLO 0434368	Coffee	48 x 72	<b>117.14</b>
VLO 0434352	Midnight	48 x 72	<b>117.14</b>



*Ideal for high-traffic areas.*

### C Water Master Wiper Mat

All-weather mat is ideal for efficient dirt control in high-traffic areas. Bi-level surface traps dirt and moisture. Molded 100% nitrile rubber grippers for mat stability. Sturdy rubber base prolongs mat life. Stain- and fade-resistant. Vacuum or rinse to clean.

No.	Color	Size	Each
VLO 4468435	Charcoal	36 x 60	<b>133.66</b>
VLO 4468436	Dark Brown	36 x 60	<b>133.66</b>
VLO 4468432	Charcoal	48 x 72	<b>213.74</b>
VLO 4468478	Dark Brown	48 x 72	<b>213.74</b>

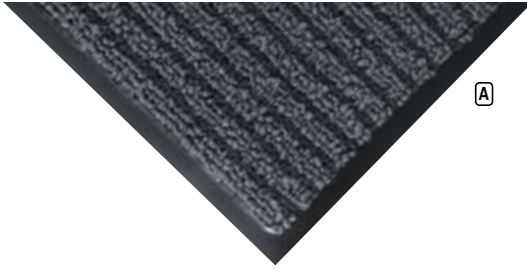
## History of...



Carpets were probably first made by nomadic peoples to cover the earthen floor in their tents. One of the most familiar labels applied to Oriental rugs and carpets, antique and new alike, is the term "tribal." The label evokes a range of associations, most of which suggest something romantically antithetical to our modern western civilized or urban existence. Tribal rugs were or are presumably made by people with a tribal social organization, very likely nomads dwelling in tents, moving from place to place with the herds of sheep and goats that provide the wool for the rugs. Such rugs are thought to be woven in designs that have been handed down faithfully in tribal tradition with little or no change for generations.







**A**

**Surface allows debris and liquid to be easily broomed away.**



**Coiled vinyl loops provide uniform compression and fatigue resistance.**

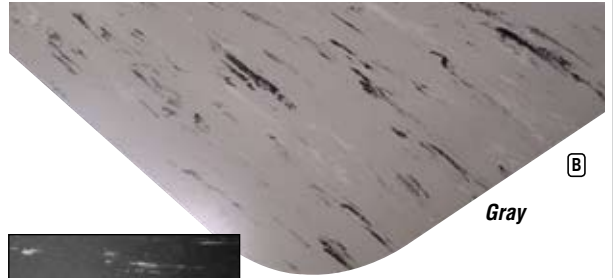
**3M**

**3M**

**A 3M™ Safety-Walk™ Cushion Mat 3270E**

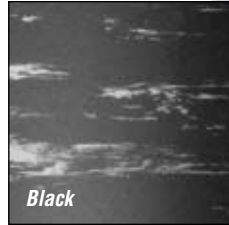
Ideal for fatigue resistance in dry areas. Dense network of coiled vinyl loops beneath surface provides uniform compression and support. Solid vinyl top construction has a durable, textured, slip-resistant surface. Textured solid surface allows debris and liquid to stay on top of mat for easy cleanup. For factory assembly or production areas with limited chemical exposure. Black.

No.	Size	Shpg. Wt.	Each
MCO 34826	36 x 60	18.6 lbs.	<b>113.30</b>
MCO 34828	36 x 120	37.2 lbs.	<b>226.56</b>
MCO 34829	48 x 120	49.6 lbs.	<b>302.08</b>
MCO 34831	48 x 240	99.2 lbs.	<b>604.16</b>



**B**

Gray



Black

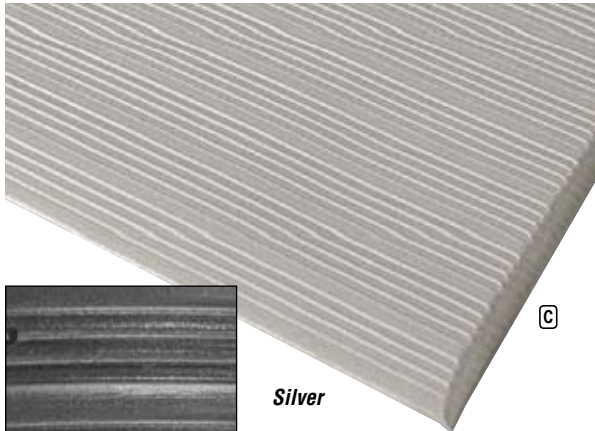
**Passport Mats and Matting**



**B Tile Top Antifatigue Mat**

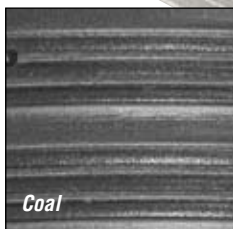
Ideal for use at cash registers or workstations. Heavy-duty vinyl tile surface is permanently laminated to a resilient sponge base. Beveled edge minimizes tripping. Mop or wipe to clean. ½" thick.

No.	Color	Size	Each
VLO 4457649	Gray	24 x 36	<b>94.92</b>
VLO 4457651	Black	24 x 36	<b>94.92</b>
VLO 4457653	Gray	36 x 60	<b>179.78</b>
VLO 4457655	Black	36 x 60	<b>179.78</b>



**C**

Silver



Coal

**C Standard Ribbed Foam Antifatigue Mat**

100% closed cell vinyl foam construction. Resistant to light chemicals. Multipurpose mat prevents fatigue; provides safety and comfort when standing is a substantial part of the job. Eliminates noise, and offers protection from chilly floors. Clean with mop or broom. Overall ¾" thickness. 36 x 60.

No.	Color	Each
VLO 0434396	Coal	<b>64.46</b>
VLO 0434402	Silver	<b>64.46</b>



**D**

**D Diamond Plate Antifatigue Mat**

Ideal for assembly lines, workstations and laboratories. Durable vinyl skin surface is permanently bonded to a buoyant sponge backing. Embossed diamond pattern top surface helps prevent slipping. Black mat has yellow safety border that meets OSHA requirements. Beveled edge helps prevent tripping. Mop or sweep to clean. Overall thickness ½". 36 x 60.

VLO 4457676	<b>Each</b>	<b>250.10</b>
-------------	-------------	---------------







**A**



**Use each mat many times. Numbered layers ensure single-sheet removal and indicate number of mats remaining.**

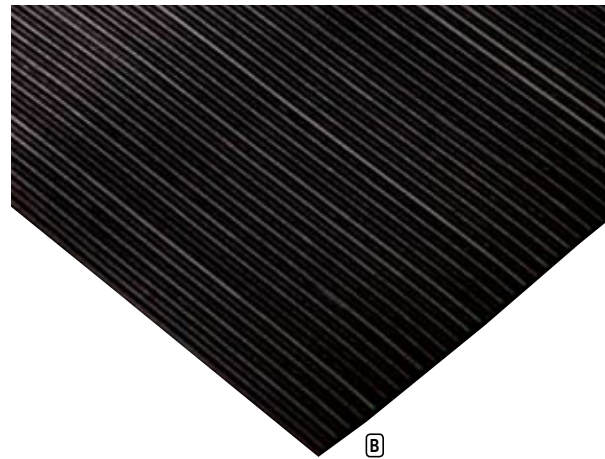
## CleanStep



### **A** CleanStep™ Indoor Adhesive Mat

Dirt-smart doormat strips dirt from shoes and wheels at the door. 30-sheet disposable starter pad attaches to a nonskid, reusable frame. Disposable sheets are coated with a specifically formulated adhesive that aggressively traps dirt particles and contaminants. Especially effective against dust and other small particles. Remove dirty sheet to uncover clean layer underneath.

No.	Description	Size	Unit
<b>CleanStep™ Mat with 30-Sheet Starter Pad</b>			
CLP 30101	White Frame/White Sheets	25½ x 31½	<b>75.98/Ea</b>
CLP 30305	Black Frame/Gray Sheets	25½ x 31½	<b>75.98/Ea</b>
<b>60-Sheet Refill Pad</b> —4 pads per case.			
CLP 60401	White Sheets	24 x 30	<b>182.36/Cs</b>
CLP 60405	Gray Sheets	24 x 30	<b>182.36/Cs</b>



**B**

## Passport Mats and Matting

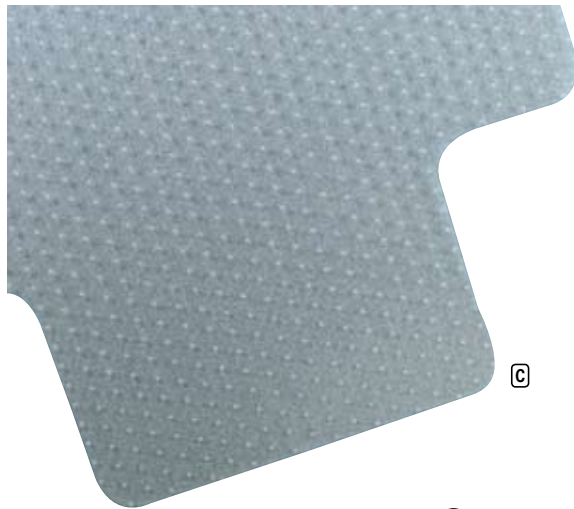


### **B** Corrugated Vinyl Runner

Medium-duty mat provides versatile floor protection at an economical price. Flexible vinyl corrugated matting channels dirt and moisture to edge. Resistant to light chemicals. Cut to any size with ordinary scissors. Black. ½" thick. 3 ft. x 75 ft.

◆VLO 0065418

**Each 455.96**



**C**

## Universal



### **C** Cleated Chair Mat for Low- to Medium-Pile Carpets

Clear vinyl provides a smooth riding surface and allows carpet beauty to show through. Cleats on back prevent movement. For carpets up to ¾" deep, including padding. Manufacturer's lifetime guarantee (under normal use with rubber or plastic casters).

No.	Overall	Lip	Shpg. Wt.	Each
<b>With Lip</b>				
UVS 56806	36 x 48	20 x 12	16 lbs.	<b>49.02</b>
◆UVS 56807	45 x 53	25 x 12	17 lbs.	<b>57.28</b>
<b>Without Lip</b>				
◆UVS 56808	46 x 60	...	20 lbs.	<b>79.74</b>



**D**

## Rubbermaid Commercial Products



### **D** Safti-Grip® Bath Mat

White vinyl with suction back to stay firmly in place. Perfect for shower stall or bathtub.

No.	Size	Each
RCP 7035 WHI	14 x 22½	<b>10.56</b>
RCP 7041-04 WHI	16 x 28	<b>16.64</b>



# How to Choose the Right Vacuum

## Step 1: Choose a style to match your needs

### ✍ UPRIGHT VACUUM CLEANERS

#### Lightweight Uprights

- Ergonomic.
- Most models weigh less than 12 lbs.
- Easy to maneuver, store and carry.
- For consistent floor surface tasks where weight is a concern.
- Limited attachments, maintain lower weight levels.

#### Manual Height Adjustment Uprights

- Ideal for cleaning rooms with different floor surfaces.
- Manual carpet height adjustment allows for more productive and effective cleaning.
- For different types of flooring surfaces, select vacuums with floor tools.
- For frequent vacuum cleaner use, look for models that have features that make it easy to replace bags, brush rolls and filters.
- A wide cleaning path is recommended to clean large, minimally-furnished rooms.

#### Automatic Height Adjustment Uprights

- For increased productivity with many carpet heights.
- Eliminates the guesswork of carpet height by automatically adjusting the power head of the vacuum.
- Indicator lights on the base control panel will show when the power head is moving "UP" and "DOWN".
- Feature dual motors for added production over single motors.

#### HEPA Filtration

Ideal for environments like hospitals where indoor air quality (IAQ) is crucial to staff and patient well-being.

- Some vacuums can accommodate high efficiency filters but, if allergies and dust removal is a priority, a true HEPA filtration vacuum is the best choice.

#### Bagless Uprights

- Does not use disposable bags.
- Dust containers are easy to access and empty.
- No checking or replacing a bag if it is full.

### ✍ CANISTER VACUUMS

- For environments with a lot of furniture and obstacles.
- Good for cleaning stairs and hard to reach areas. Its low profile and highly maneuverable flexible hoses allow for precise cleaning under furniture.
- Feature a variety of tools for floors and carpets.

### ✍ BACKPACK VACUUMS

- For cleaning in congested areas or hard-to-reach areas.
- Ergonomic, quiet, easy to use and mobile.
- The backpack vacuum weight should rest on a user's hips, avoiding weight on the shoulder or back.
- Units should have On/Off switch mounted on the hip within easy reach of the operator.

### ✍ CORDLESS/HANDHELD VACUUM CLEANERS

- Great on stairs and inside vehicles
- Lightweight and portable.
- Good for small, hard-to-reach places.
- Rechargeable for quick pick-ups.
- Cordless feature enhances mobility.

### ✍ WET/DRY VACUUMS

- Perfect for picking up wet spills or large debris.
- Safely vacuums large volumes of water and large volumes of dirt.
- Eliminates the cost of disposable bags.
- Dual tanks allow instant wet to dry changeover.
- Large, robust wheels will prevent tipping over.

### ✍ MECHANICAL SWEEPERS

Non-electric push sweepers make little noise and are perfect for quick cleaning.

- No power needed and easy to maneuver through tight spaces.
- Easy to carry and store.
- Requires no set up time.
- Best for touch-ups.

## Step 2: Consider these tips before you buy

#### POWER CORD:

Cordless varieties or an extra long cord will allow you to move from room to room without having to unplug and switch power sources. Quick cord releases make getting started and putting the vacuum away after use easier.

#### CLEANING PATH:

Vacuums with wider cleaning paths will save time and increase productivity while cleaning.

#### VACUUM PERFORMANCE:

Two major ways to measure the performance of a vacuum are airflow (CFM) and lift (in).

#### FILTERS:

For optimal vacuum performance, check your filters frequently. For allergen sensitive areas, HEPA filtration systems are highly recommended.

#### BAG REPLACEMENT:

As the bag fills, less air flows out and the cleaning performance of the vacuum reduces. It is very important to replace or empty bags when they are full.

#### ATTACHMENTS:

You can find a variety of tools and accessories for vacuum cleaners. Select the tools, filters and accessories that address your needs best.

#### EASY TO USE, ASSEMBLE AND MAINTAIN:

It is important that your vacuum cleaner is easy to use, assemble (no tools required) and maintain (easy to replace bags, belts and filters).

# Vacuums *Commercial Uprights*



**Multi-Pro SC785 weighs 14 lbs. and stores easily—fold-down handle lowers height to only 28½"!**



**A**



**B**

**C**



**Dual-zippered access panel makes bag installation fast and efficient.**

**D**



**E**



**F**



**NEW**



**Allergen Filtration Bag System.**



**A Sanitaire® Lightweight Two-Motor Commercial Upright**



**B Sanitaire® Commercial Upright with Vibra-Groomer II®**



**C Sanitaire® Commercial Upright Quick Kleen® Fan Chamber with Vibra Groomer II®**



**D Sanitaire® Commercial Upright with Allergen Filtration**



**E Sanitaire® Widetrack® Commercial Upright with Quick Kleen Fan Chamber and Vibra Groomer I®**



**F Ultra Light Vacuum**

	<b>A</b>	<b>B</b>	<b>C</b>	<b>D</b>	<b>E</b>	<b>F</b>
<b>Model No.</b>	SC785	SC684	SC886	SC888	SC899	UL12
<b>No.</b>	EUR 785	EUR 684	EUR 886	EUR 888	EUR 899	RCP 9VUL12
<b>Each</b>	<b>240.52</b>	<b>314.46</b>	<b>391.90</b>	<b>478.46</b>	<b>522.12</b>	<b>319.20</b>
<b>Motor</b>	6.5 amp	7.0 amp	7.0 amp	7.0 amp	7.0 amp	4.0 amp
<b>Cleaning Path</b>	12"	12"	12"	12"	12"	12"
<b>Carpet Height Adjustment</b>	Automatic	Six-Position	Six-Position	Six-Position	Six-Position	Automatic
<b>On-board Tools</b>	Yes	....	....	....	....	....
<b>Headlight</b>	....	....	....	Yes	Yes	....
<b>Furniture Guard</b>	Yes	Yes	Yes	Yes	Yes	Yes
<b>Filtration System</b>	Allergen Filtration*	Standard Filtration	Standard Filtration	Allergen Filtration†	Standard Filtration	....
<b>Unit Wt.</b>	14 lbs.	16 lbs.	17½ lbs.	17½ lbs.	18½ lbs.	12.8 lbs.
<b>Cord Length</b>	20 ft.	50 ft.	50 ft.	50 ft.	50 ft.	40 ft.
<b>UL Approved</b>	Yes	Yes	Yes	Yes	Yes	Yes
<b>(Commercial Use)</b>						
<b>OSHA Compliant</b>	Yes	Yes	Yes	Yes	Yes	Yes
<b>Shpg. Wt.</b>	22 lbs.	18 lbs.	19 lbs.	19 lbs.	22 lbs.	15.5 lbs.
<b>Manufacturer's Warranty</b>	One-Year Parts/Labor Commercial	One-Year Parts/Labor Commercial	One-Year Parts/Labor Commercial	One-Year Parts/Labor Commercial	One-Year Parts/Labor Commercial	One-Year Parts/Labor Commercial
<b>Bags</b>	EUR 61125-12 (one incl.)	"Shake Out" Cloth Bag (incl.)	"Shake Out" Cloth Bag (incl.)	EUR 63213-10 (one incl.)	"Shake Out" Cloth Bag (incl.)	Easy Empty Cloth Bag (incl.) RCP 9VULBC12

\*Retains up to 99.9% of pollens and dust †With ARM & HAMMER odor elimination